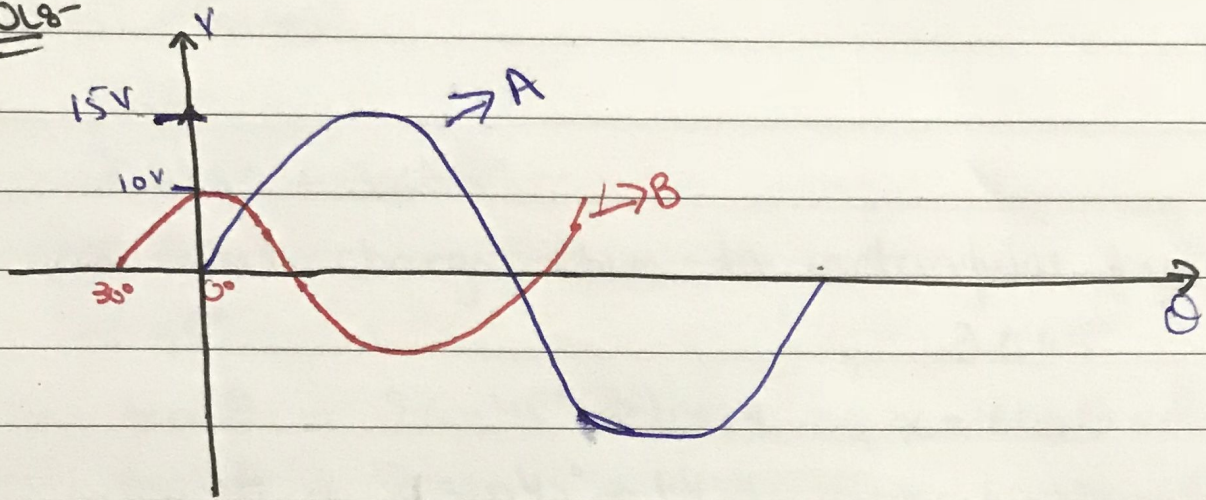


Date:

Quiz #1 Solutions

Q#1:

Soln-



Q#2:

$$30 \sin(4\pi t - 75^\circ)$$

Soln

Amplitude $\Rightarrow 30V$

phase $\phi \Rightarrow 75^\circ$

angular frequency, $\omega \Rightarrow 4\pi$

Period, $T \Rightarrow \frac{2\pi}{\omega} = \frac{2\pi}{4\pi} \Rightarrow \frac{1}{2} s$

frequency, $F \Rightarrow \frac{1}{T} \Rightarrow 1/\frac{1}{2} \Rightarrow 2 Hz$