



# ISRA UNIVERSITY

Islamabad Campus

Program: BTECH (Electrical)  
Semester – Spring 2018

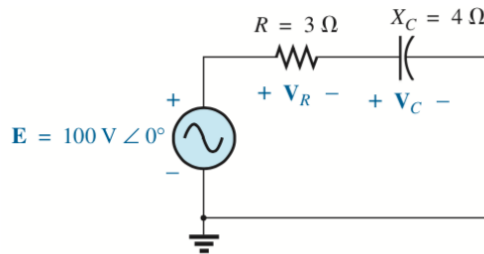
## ETCA-252 Circuit Analysis-II

Assignment – 3  
Marks: 15

**Due Date: 21/05/2018**  
**Handout Date: 14/05/2018**

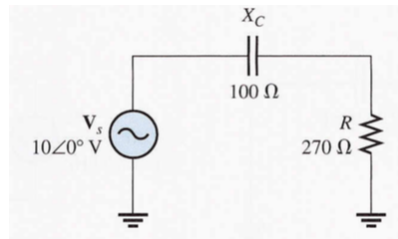
Question # 1:

Using the voltage divider rule, find the voltage across each element of the circuit:



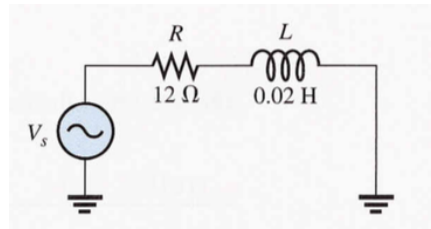
Question # 2:

Express the total impedance of the following circuit in both polar and rectangular form:



Question # 3:

Determine the impedance at 1kHz, for the following circuit:



**Good Luck**